



DOUGLAS SQUARE PLAZA

1405-1465 NE Douglas Street, Lee's Summit, MO



LEASE RATE: \$18/SF NNN | 1,090 SF SPACE

DEMOGRAPHICS

	1 mile	3 miles	5 miles
Estimated Population	4,676	49,534	91,692
Avg. Household Income	\$92,102	\$110,250	\$129,413

- Prime Lee's Summit retail/office space for lease
- Great visibility and access to I-470
- Next to B&B Theatres, Applebee's, Whataburger, and more
- I-470 & NE Douglas Street carries over 100,500 cars per day
- Across from Saint Luke's East Health Campus



CLICK HERE TO VIEW MORE LISTING INFORMATION

For More Information Contact:

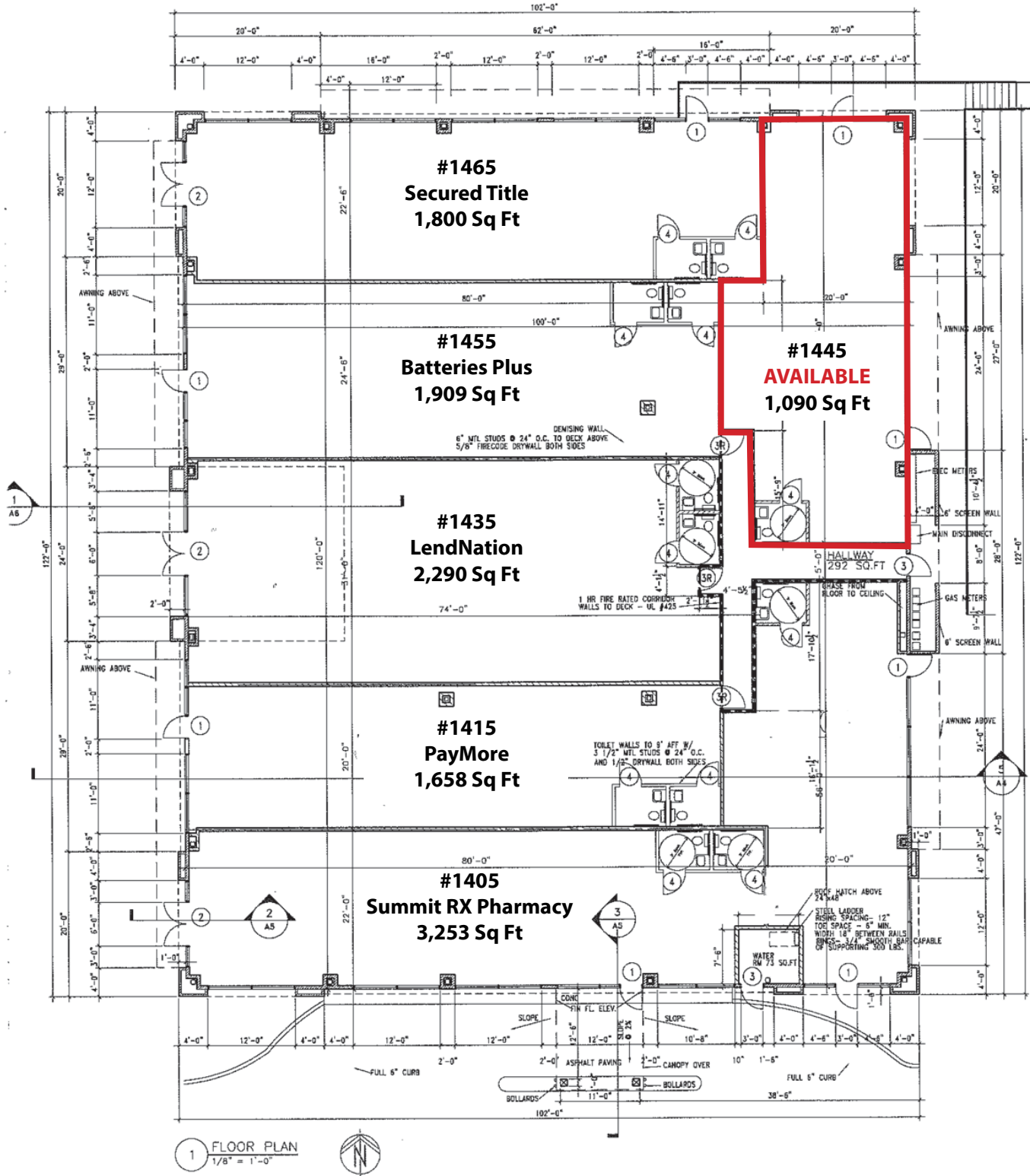
KARSYN SMITH | 816.412.7372 | karsynsmith@blockandco.com

DAVID BLOCK | 816.412.7400 | dblock@blockandco.com

Exclusive Agents



SITE PLAN





DOUGLAS SQUARE PLAZA

1405-1465 NE Douglas Street, Lee's Summit, MO

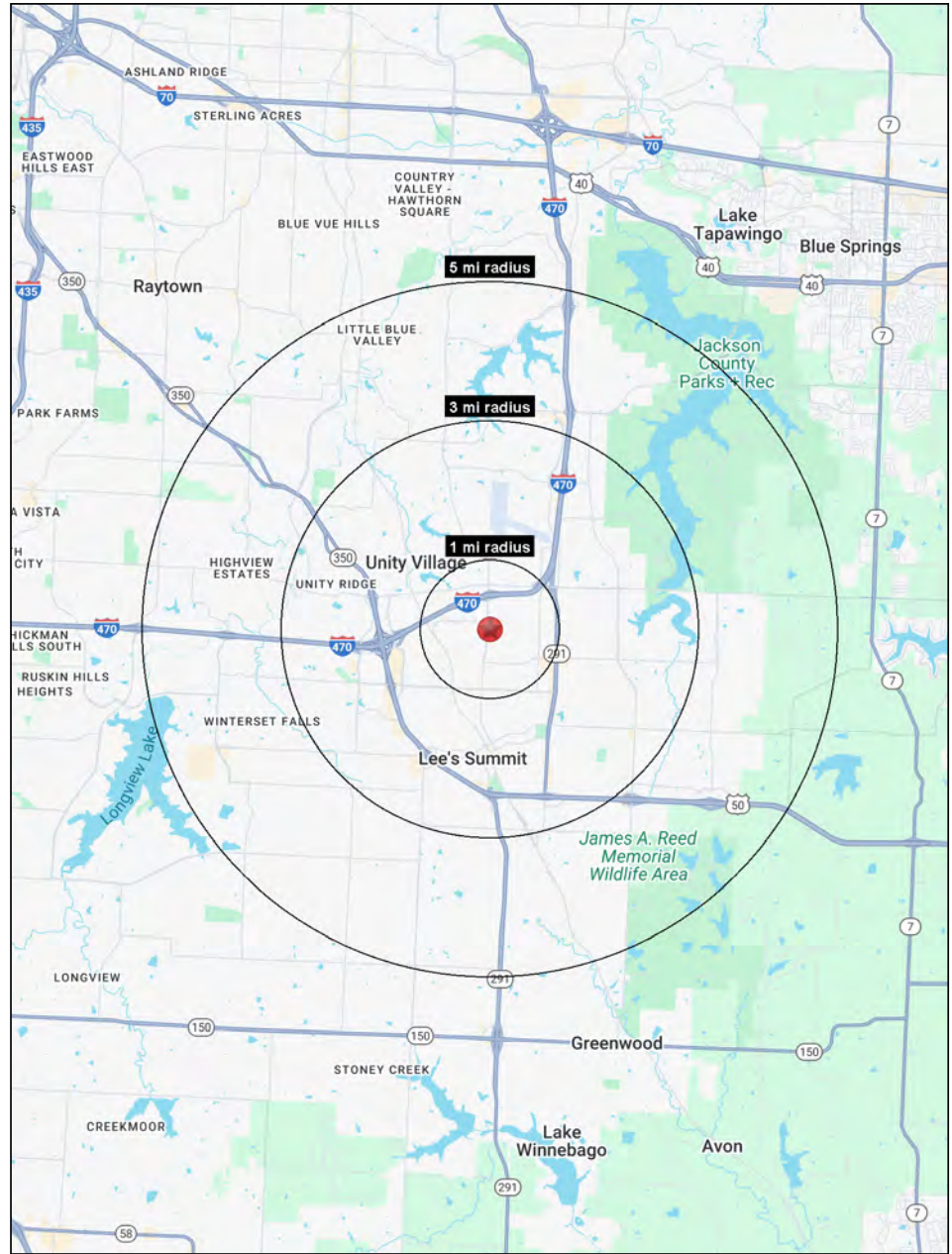
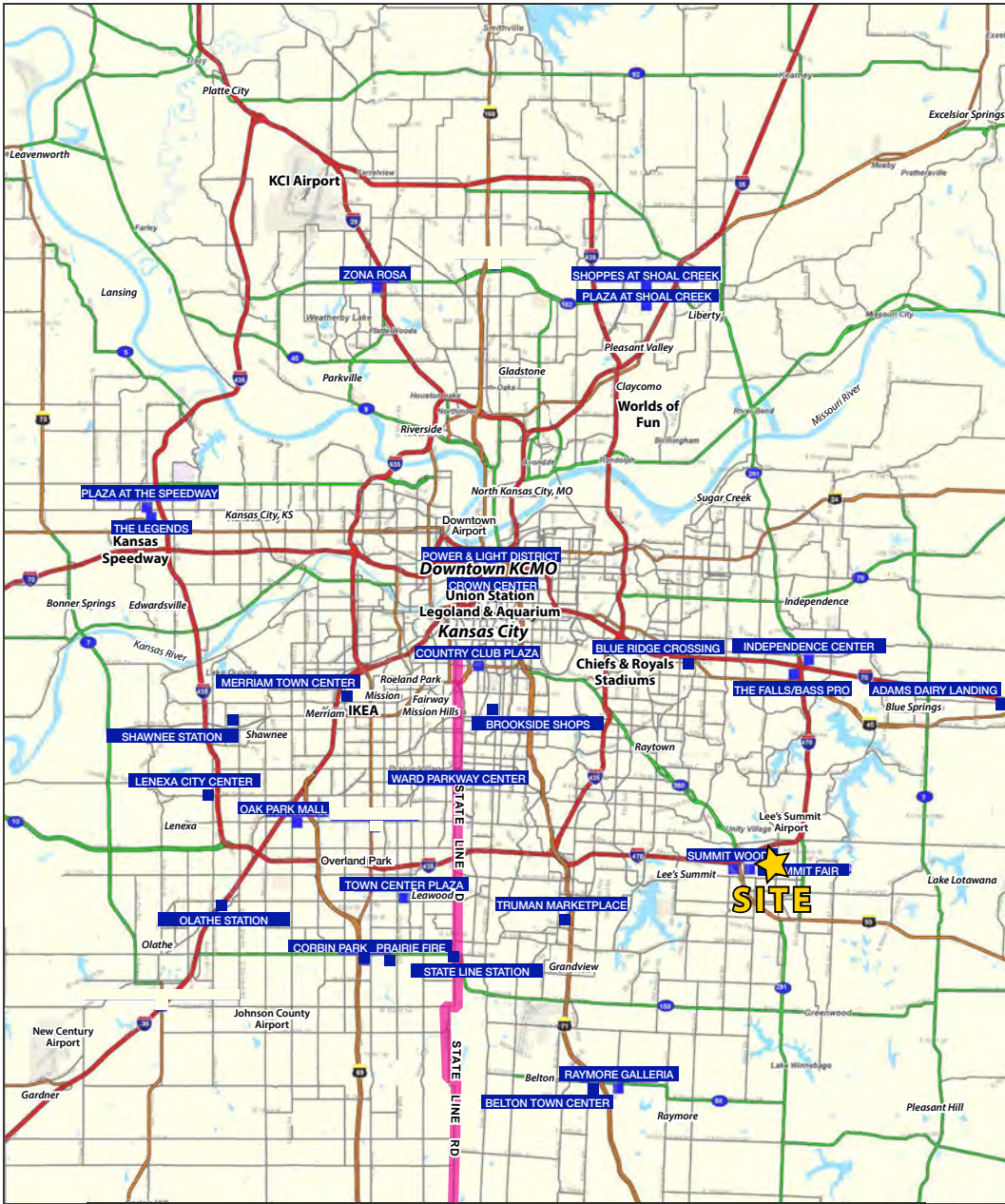
AERIAL





DOUGLAS SQUARE PLAZA

1405-1465 NE Douglas Street, Lee's Summit, MO



All information furnished regarding property for sale or lease is from sources deemed reliable, but no warranty or representation is made as to the accuracy thereof and the same is subject to errors, omissions, changes of prices, rental or other conditions, prior sale or lease or withdrawal without notice.



DOUGLAS SQUARE PLAZA

1405-1465 NE Douglas Street, Lee's Summit, MO

1405-1465 NE Douglas Street Lee's Summit, MO 64086	1 mi radius	3 mi radius	5 mi radius
Population			
2024 Estimated Population	4,676	49,534	91,692
2029 Projected Population	4,559	51,189	94,391
2020 Census Population	5,117	49,713	91,379
2010 Census Population	4,596	47,747	83,317
Projected Annual Growth 2024 to 2029	-0.5%	0.7%	0.6%
Historical Annual Growth 2010 to 2024	0.1%	0.3%	0.7%
2024 Median Age	38.9	40.3	40.2
Households			
2024 Estimated Households	2,202	21,146	36,601
2029 Projected Households	2,143	21,949	37,883
2020 Census Households	2,262	20,382	35,345
2010 Census Households	1,984	19,235	31,872
Projected Annual Growth 2024 to 2029	-0.5%	0.8%	0.7%
Historical Annual Growth 2010 to 2024	0.8%	0.7%	1.1%
Race and Ethnicity			
2024 Estimated White	73.5%	78.5%	77.6%
2024 Estimated Black or African American	13.9%	11.6%	12.8%
2024 Estimated Asian or Pacific Islander	5.0%	2.0%	2.3%
2024 Estimated American Indian or Native Alaskan	0.4%	0.2%	0.2%
2024 Estimated Other Races	7.2%	7.7%	7.0%
2024 Estimated Hispanic	6.7%	6.8%	6.1%
Income			
2024 Estimated Average Household Income	\$92,102	\$110,250	\$129,413
2024 Estimated Median Household Income	\$74,941	\$85,157	\$100,688
2024 Estimated Per Capita Income	\$43,397	\$47,147	\$51,716
Education (Age 25+)			
2024 Estimated Elementary (Grade Level 0 to 8)	1.6%	1.5%	1.3%
2024 Estimated Some High School (Grade Level 9 to 11)	2.4%	2.4%	2.2%
2024 Estimated High School Graduate	21.2%	22.0%	19.9%
2024 Estimated Some College	13.8%	22.3%	21.6%
2024 Estimated Associates Degree Only	9.8%	10.3%	8.9%
2024 Estimated Bachelors Degree Only	33.2%	26.2%	27.7%
2024 Estimated Graduate Degree	18.0%	15.4%	18.4%
Business			
2024 Estimated Total Businesses	429	2,695	4,008
2024 Estimated Total Employees	5,419	28,200	39,123
2024 Estimated Employee Population per Business	12.6	10.5	9.8
2024 Estimated Residential Population per Business	10.9	18.4	22.9

©2025, Sites USA, Chandler, Arizona, 480-491-1112 Demographic Source: Applied Geographic Solutions 11/2024, TIGER Geography - RS1

